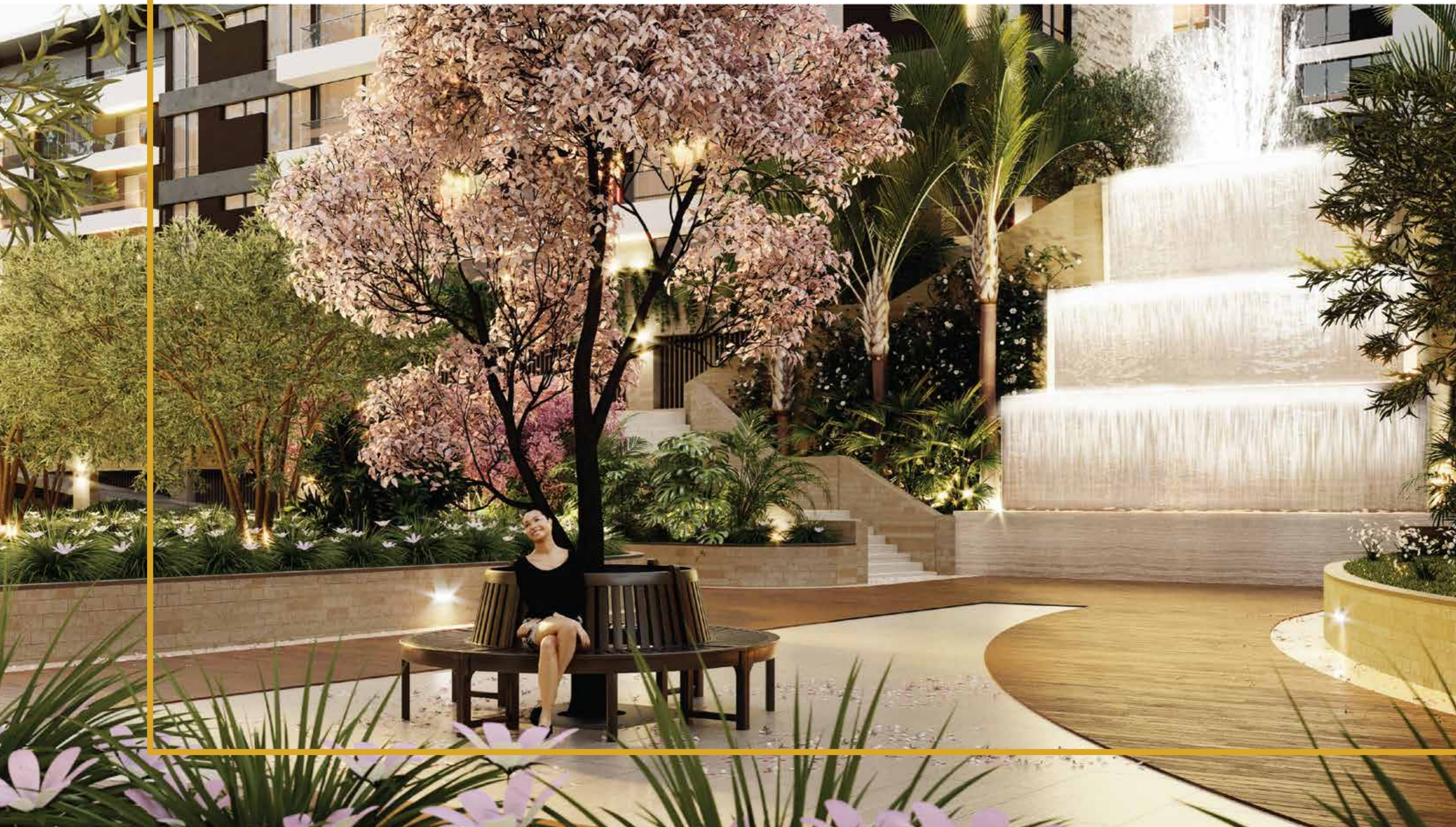


ENNAKI

DISCOVER A NEW AGE OF REAL ESTATE



ENAKI

Enso: |en-so| - *n*

1. A sacred symbol in the Japanese school of zen meaning circle of togetherness 2. Circle of life and connectedness of existence.

Koiyaki: |koh-ya-kee| - *n*

1. A Maasai African name. 2. Meaning "one of a good heart".

Enso, the design inspiration, and Koiyaki, a nod to the lineage and legacy for this development, come together to forge ENAKI, an embodiment of being at its finest, individually and communally.

Timeless yet contemporary, Enaki is an exquisite new addition to its idyllic suburban surround, in an enviable city-fringe location offering vibrant, diverse and connected experiences. The vision for this holistic 22-acre development is a fusion of nature-inspired design and contemporary lifestyle to create a world that captivates mind, body and soul.

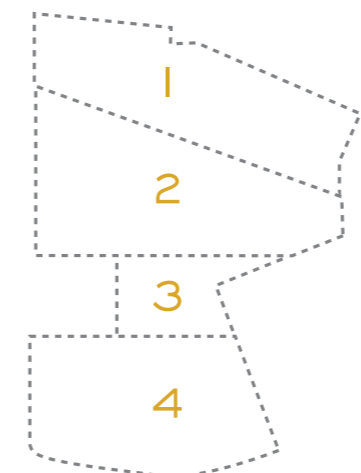
The enchanting Five Senses Botanical Garden on one end links to the vibrant Town Square on the other through the Residences, all these carefully curating your journey from first light to sunset in the epitome of truly connected living.



LOCATION

Enaki offers an incredible locale for those craving the privacy and natural beauty of one of Nairobi's most enviable addresses, whilst enjoying the convenience of city fringe living. Right on the edge of Nyari, Gigiri and Kitisuru, the town at Enaki is a stone's throw from renowned schools, shopping centres and diplomatic organizations, and falls within the UN-approved "blue zone". The newly opened Westlands-Redhill Link Road will open up Enaki to the main hubs of the city within moments, creating the city's most livable and desirable address.

Coordinates: -1.222769, 36.786828
Nairobi, Kenya



PROPOSED MASTERPLAN

1 FIVE SENSES BOTANICAL GARDEN

Designed by award-winning architects, Five Senses is a sensorial botanical garden with an effusion of experiences where design meanders through nature. This 6.3 acre jewel is crafted to enliven the five senses in a creative display where lush greenery embraces every moment. The garden boasts a walking trail, cycle path, expansive man-made lake with an over-water restaurant, children's nature park, fitness circuit, events garden, outdoor amphitheater, spa, work pods and intimate retreats.

2 RESIDENTIAL RESORT: LIVING PARKSIDE

Overlooking Five Senses Botanical Garden, Living Parkside is connected by the Enso Bridge to Living Townside. This soulful living experience is enshrined in the best elements of nature's beauty and is an abode for all. With views into Five Senses, the forest or gardens, these residential units vary in sizes from studios to 4-bed grand residences, duplexes and penthouses. Living Parkside will also be host to the Anko Forest, a private treed sanctuary, residents lounge, zen pool and retreat, a leisure pool and childrens' playscape.

3 RESIDENTIAL RESORT: LIVING TOWNSIDE

Just a stroll away from the Town Square, Living Townside is connected to Living Parkside by the Enso Bridge. This vibrant and lively community is set along Enaki Walk with design elements that evoke a bespoke urban experience. Living Townside offers 1 and 2-bed residences pivoted on social interaction and communal spirit. Residents will have access to a host of resort-like facilities including a convenience store, reading room, business hub, screening room, dance studio, sports lounge, gymnasium and fitness pool.

4 THE TOWN SQUARE

The Town Square at Enaki is a modernized take on quintessential marketplace traditions. Courtyards, piazzas and streets create a fluid townscape, offering the opportunity for a walkable town-style environment. In a mix of function and leisure, the Town Square will offer a myriad of eateries, retail outlets and recreation for Enaki town residents and the public. The Koiya Town Hall shall be host to events, exhibitions, galas and functions whilst offices and modern work spaces complete the Town Square offering.



The Five Senses Botanical Garden draws on Enaki's vision of the circle of togetherness, encompassing an effusion of experiences that ignite the spark of true holistic living. Designed by award-winning Spanish architects, this 6.3 acre masterpiece lures the senses and bequeaths a sensorial experience in a nature-bedecked forest's embrace. Zestful experiences and intimate moments are orchestrated in a symphony of aromatic botany, over-water embraces, cavernous escapes and interactive trails meandering through the lush green canvas.

"The best time to plant a tree was twenty years ago.
The second best time is now."

- Chinese Proverb

FIVE SENSES BOTANICAL GARDEN



FIVE SENSES BOTANICAL GARDEN



THE PATH OF SIGHT
The Sun Path
Coloured Shadows



THE PATH OF SCENT
Aromatic Rooms
Scented Tree Gazebos
Flower Tunnels



THE PATH OF SOUND
The Rhythm Walk
Percussive Water
Wind Melodies & Birds



THE PATH OF TASTE
The Fruit Maze
The Tea House



THE PATH OF TOUCH
The Path Of Embrace
Sensation Maze
Yoga Garden



VENUES
1 Amphitheatre
2 Lyre Leaf
3 Work Pods
4 Waterlily Restaurant
5 Main Plaza



ACTIVITIES
1 Children's Nature Park
2 Fitness Circuit
3 Walking Trail
4 Function Lawn



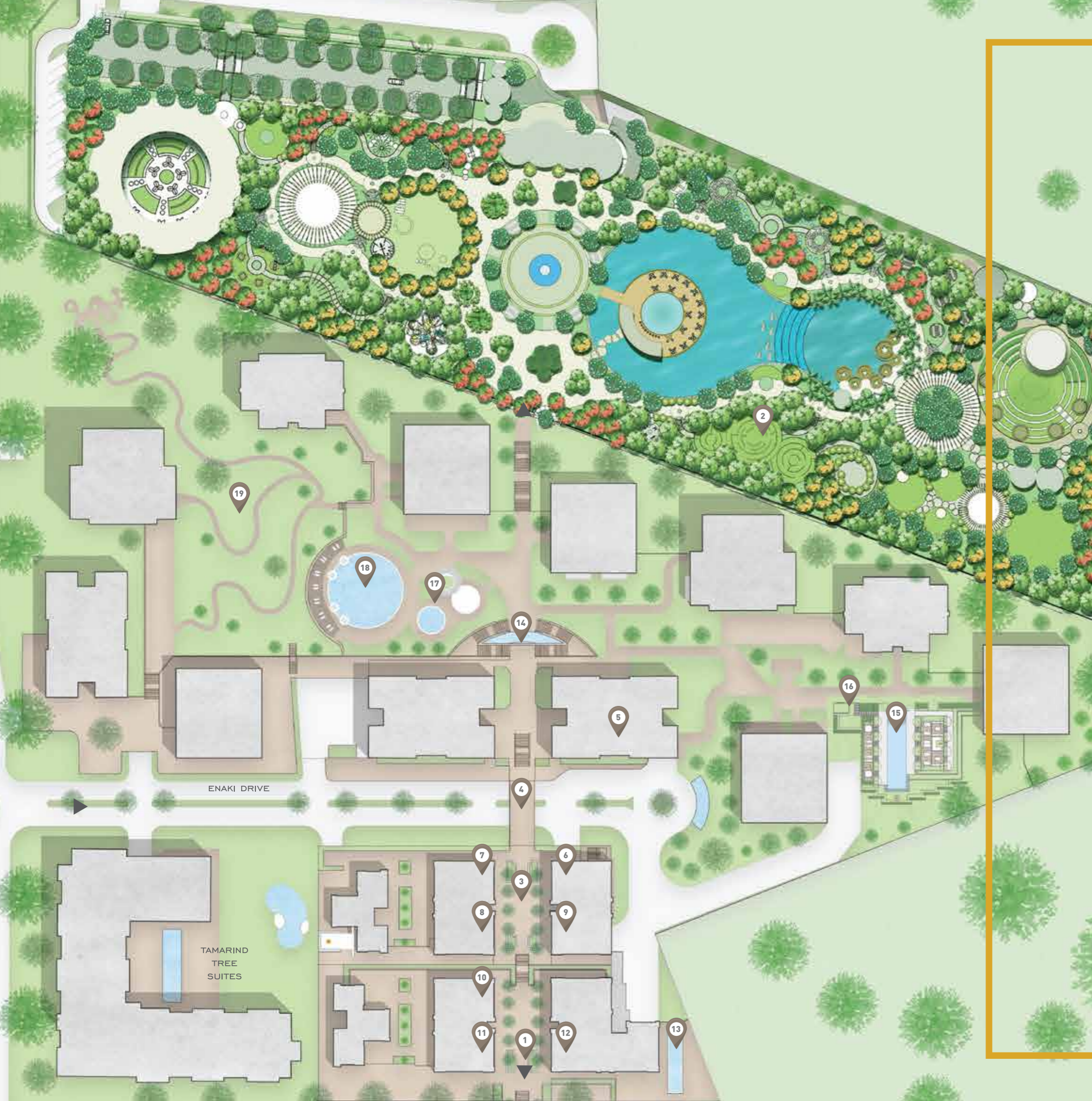
FEATURES
1 Lake Water Feature
2 Water Cascades
3 Plaza Water Feature



The residential resort at Enaki is an unrivalled collection of bespoke homes crowned by luxury penthouses above and superbly crafted duplexes below. A montage of function, flair and form, the residences bring to Enaki a soulful living experience in an unmatched town setting.

The residential resort sits on 9.6 acres, boasting 70% green and open spaces, and is adorned with a host of five-star resident facilities that bring holiday living home. With the Five Sense Botanical Garden at one end and the Town Square at the other, Enaki fuses the best elements of parkside living with the excitement and colour of urban life making for a truly chic, convenient and connected lifestyle.

RESIDENTIAL RESORT



RESIDENT LIFE

1 TOWN SQUARE

The retail and commercial precinct of Enaki, just a stroll away from Living Townside and a golf cart ride away from Living Parkside.

2 FIVE SENSES BOTANICAL GARDEN

A bejewelled 6-acre green experience on the doorstep of Living Parkside and a short stroll from Living Townside.

3 ENAKI WALK

The signature avenue of Enaki connects all aspects of the town, taking you from The Town Square to Living Townside, over the Enso Bridge to Living Parkside and then opening to Five Senses Botanical Garden.

4 ENSO BRIDGE

Poised over the grand entrance of Enaki Drive, this forms the link between Living Townside and Living Parkside.

5 THE DUKA

Your in-house convenience store for every day essentials right outside your door.

6 BOOK CLUB

A thinking pod to inspire group work or study sessions, perfect for brainstorming, creative thinking and interactive experiences.

7 PRIVATE LOUNGE

Perfect for mingling or hosting, this is an ambient affair with seating areas, tv screen and mini-bar.

8 URBAN BAR & LOUNGE

Head down to your local watering hole and catch up with friends over a drink and a game of pool or darts, or watch the latest game of your favourite sport.

9 HOME THEATRE

A home theatre at your door step, an ideal setting to host movie night or indulge in an extravaganza of video games.

10 DANCE STUDIO

Join your favourite class of Zumba, dance, aerobics or yoga at the Dance Studio along Enaki Walk.

11 GAMING

The ideal room for all your recreational needs. Enjoy a variety of entertainment from various board games to a dedicated PlayStation corner.

12 FITNESS CLUB

Fully equipped indoor gym for your daily fitness routine.

13 FITNESS POOL

A 19m long pool perfect for laps.

14 THE CASCADES

These falling waters are a scenic gateway to the Living Parkside residences.

15 ZEN POOL

An 20m x 5m oasis of relaxation amidst a green setting, with steam room and sauna to complete your downtime.

16 STEAM, SAUNA & MASSAGE ROOM

Unwind and pamper yourself to a session in the steam and sauna room, or book a treatment in the massage room right around your corner.

17 THE PLAY POD

The ideal in a child's world, this is a creative combination of indoor, outdoor and water play for young children.

18 LEISURE POOL

A splash of excitement for all, an expansive waterbed with floating sun beds and poolside loungers.

19 ANKO FOREST

An inviting haven of trees providing a canopy for forest walks and mini-golf.

OTHER AMENITIES:

Grand Reception Lobby. Concierge. Fully Walkable Site. Golf Cart Route. Designated Guest Parking. Management Office. Sales & Letting Office. Staff Lounge & Facilities. Caretakers Flat. Resident Stores.



Situated on 6.2 acres and exuding a true cosmopolitan town ambience, the Enaki Town Square pays homage to the quintessential market place, the heart and soul of community interaction. A journey through the bustling piazzas, courtyards, tree-lined streets and alleyways provides discovery of the unmatched retail mix of outstanding dining, convenience shopping, entertainment and leisure.

The Town Square is connected to the Residences by the Enaki Walk, designed to respond to Nairobi's culture and climate with an open, energetic environment where indoor and outdoor connections are created at every turn.

TOWN SQUARE



RETAIL & COMMERCIAL PRECINCT

A SOCIAL CITADEL

The Town Square infuses life into Enaki with enduringly popular cafes and artisan food markets, thriving bars, live music and a buzzing entertainment scene, bringing together residents and visitors in the epitome of truly social living. For fun-loving friends, out-and-about families or people-watching solitude, Enaki's Town Square enriches every little experience in all walks of life

BOUTIQUE ELEGANCE

Big city chic and old town charm blend seamlessly at Enaki's Town Square to create a superb urban amenity where window-shopping will be a coveted pastime. With over 50 retail outlets and unique restaurants, topped up with an array of pop-up markets and stalls, the Town Square will be a walkable city sanctuary where art, style and ambience converge.

CAFE CULTURE

A remarkable selection of dining establishments will make the Town Square a gourmet day-night food destination. With its vibrant blend of cafes, casual eateries, patisseries, fine dining, fresh produce markets and bars within the precinct, Enaki's food culture will be a haven for the connoisseur and the setting stage for a delightfully curated culinary journey.

WORK DISTRICT

Enaki's catalyst for growth are its workspaces, offering a unique experience in the heart of the Town Square, with internal vistas ideal for a professional operation, and an external doorstep of world-class facilities. Boasting the dynamic duo of function and flair, working at Enaki will showcase the connection of people and ideas, and completes the Enaki life offering.

WHY ENAKI

STRATEGIC LOCATION

Enaki is located amidst Nairobi's most elite suburbs, in a location considered to be the most coveted in the city, and just a stone's throw from the UN, US Embassy and major diplomatic missions. The new link road connecting to Waiyaki Way will create exponential openings in the area, connecting Enaki to Westlands, Nairobi's vibrant commercial district, in under 15 minutes.

GROWTH AREA

The establishment and sequential expansion of the UN, coupled with the concentration of embassies and NGOs in the area has created a strong local community in Nyari, Runda and Gigiri. This population with high purchasing power has sustained property demand creating a market with strong growth trends and high forecasts of future growth in real estate values.

SUPPLY GAP

Real estate supply in the area has centered on large, expansive properties. This has served the needs of one segment of the local community, but has created a supply gap of niche smaller residences. Enaki was conceptualized to meet this supply gap and has strong potential for sustained demand and high rental yields.

MIXED-USE COMMUNITY

Developments with mixed-use wholesome offerings are garnering a wave of demand in Kenya and premiums in price and rentals of up to 40% as they meet a strong need for integrated living. Enaki will be the first integrated development in the locale, and with its fully walkable design, will be the premier mixed-use destination in the city.

UNPARALLELED LIFESTYLE

The vision for Enaki has been to create a lifestyle experience like no other, with design hinged on a needs-based analysis of all demographics and benchmarked to global trends. This has resulted in a resort-like lifestyle that will be the first of its kind in Nairobi, with lifestyle, quality, convenience and safety that appeals to both the local and expatriate markets.



MEET THE CREATORS

Developers:

Rosslyn Suites Ltd
Rosslyn Office Park Ltd
Rosslyn Convention Centre Ltd

Development Manager & Development
Consultants:

HassConsult Ltd

Architect:

Bowman & Associates

Project Manager:

Limojade Management Ltd

Structural Engineers:

Ngasi Consulting Engineers

Services Engineers:

LDK Africa Ltd

Quantity Surveyors:

Barker & Barton LLP

Botanical Garden Master Planner:

Lifescapes Dezine Innovations

Legal Advisory:

O&M Law LLP

SOLE SELLING AGENTS



ABC Place, Waiyaki Way
P.O. Box 14090 - 00800 Nairobi Kenya,
T: 0709 479 000
E: hello@hassconsult.com | W: www.hassconsult.com

Sales: 0709 479 479

Property Reference No: 2020



WWW.ENAKI.TOWN