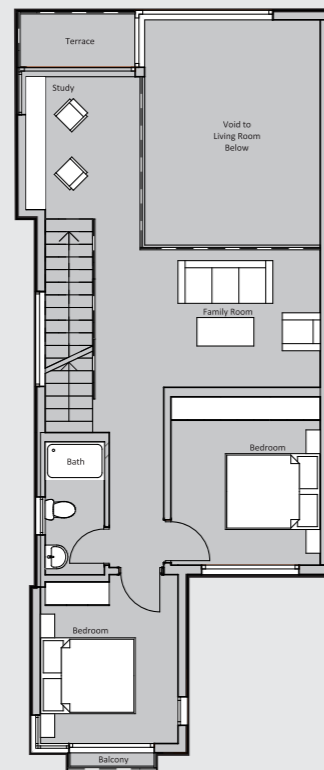
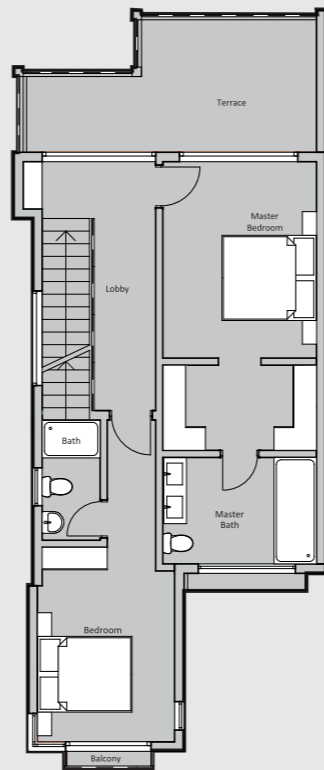


Ground Level



First Level

4 Bedroom Townhouse  
2,467 sqft



Terrace Level

# The Akeva Home

4 Bedroom Townhouse • 2,467 sqft

- Set on three floors with views over the valley
- Spectacular double height lounge opening onto outdoor patio and garden
- Spacious dining with bar detail adjacent to semi-open plan kitchen
- First floor family room with study overlooking the ground floor lounge
- Lavish top floor master suite with large roof terrace
- DSQ accessed from Laundry Yard
- Car park for 2

