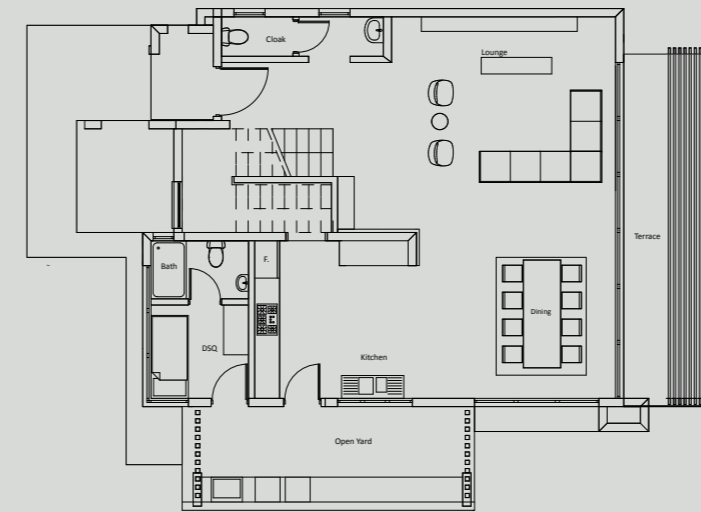
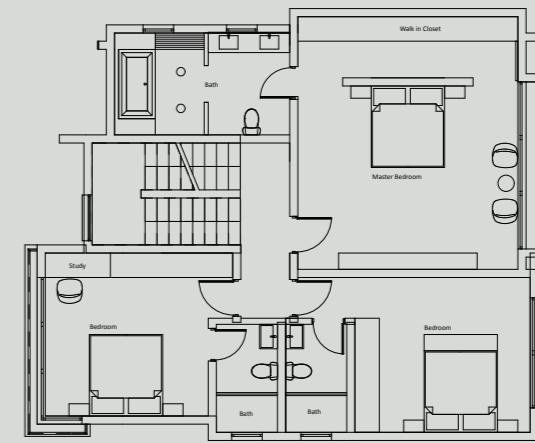


## A CHARMING ARCHITECTURAL ELEMENT

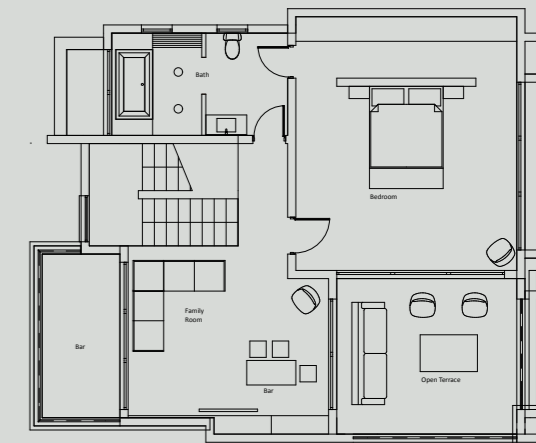
A walkway leads to the main entry that allures you to the cozy living area sprawling on to a terrace embracing the natural serene surrounding. The overlooking dining area is adjacent to an open kitchen, both stylish and functional. The first level features three ensuite bedrooms, one being the master ensuite bedroom with a personal retreat offering privacy and a sense of relaxation and rest. The top floor is the entertaining space of the home with an extra ensuite bedroom and a family room with an open terrace to enjoy the haven of greenery.



Ground Level



First Level



Terrace Level

**4 Bedroom Townhouse  
3,983 sqft**