

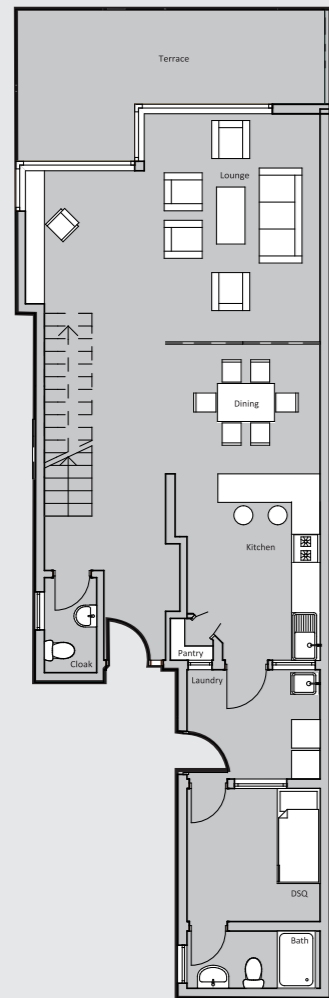




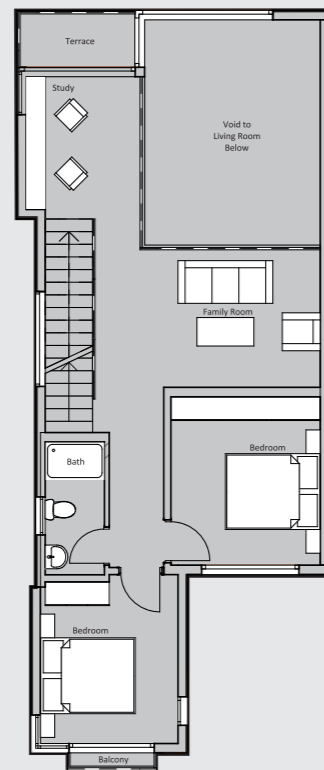
## A Rare Discovery

An enlivening gated community is soon to be fused in the suburbs of Loresho, enveloped on a nest of greenery spanning over 0.75 acres. The development enjoys access amidst a tangle of brushwood through either Waiyaki Way or Lower Kabete. The exclusive homes comprise of 12 luxurious town houses that are a mix of artful conception and homely beauty for a comfortable living experience.

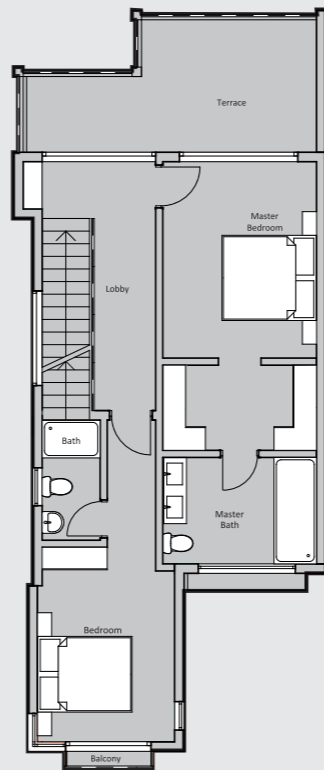




Ground Level



First Level



Terrace Level

**4 Bedroom Townhouse**  
2,467 sqft

# The Akeva Home

4 Bedroom Townhouse • 2,467 sqft

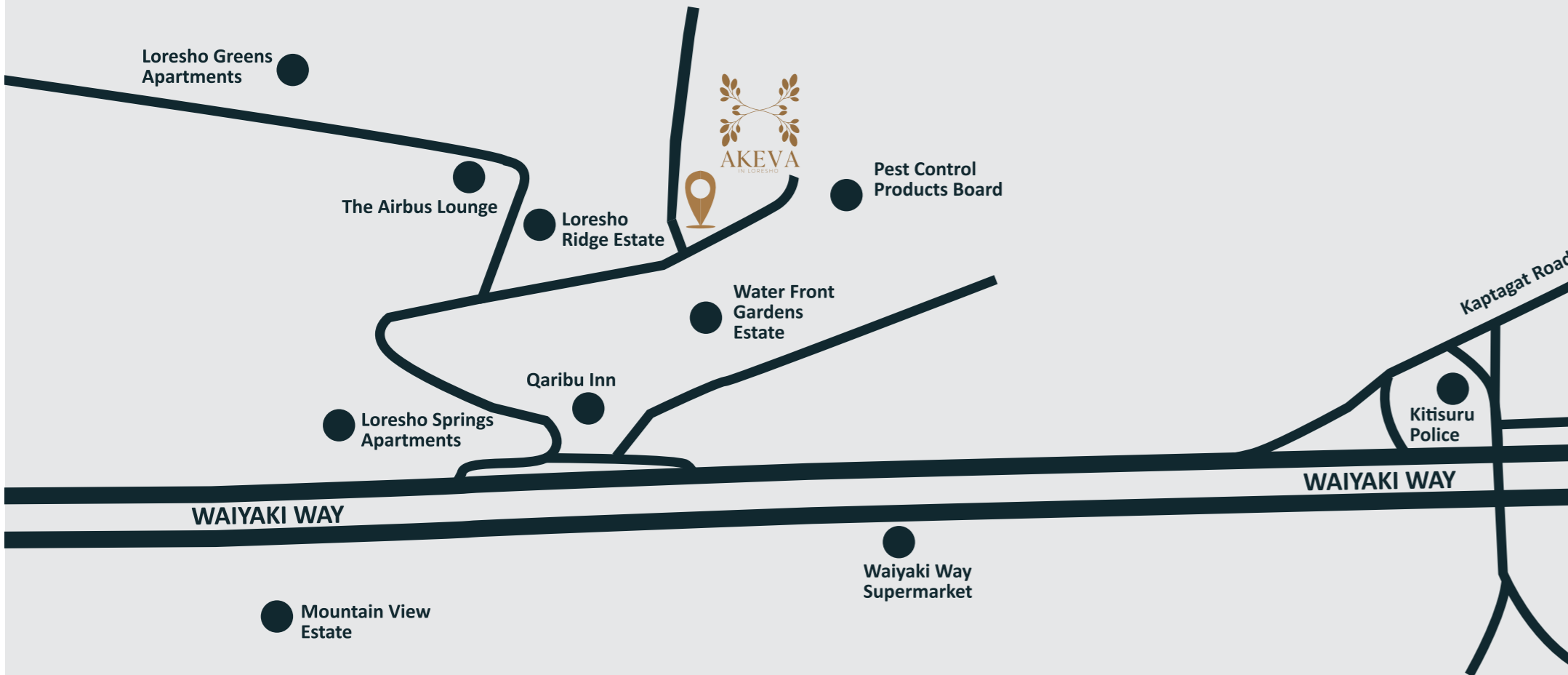
- Set on three floors with views over the valley
- Spectacular double height lounge opening onto outdoor patio and garden
- Spacious dining with bar detail adjacent to semi-open plan kitchen
- First floor family room with study overlooking the ground floor lounge
- Lavish top floor master suite with large roof terrace
- DSQ accessed from Laundry Yard
- Car park for 2



# Location

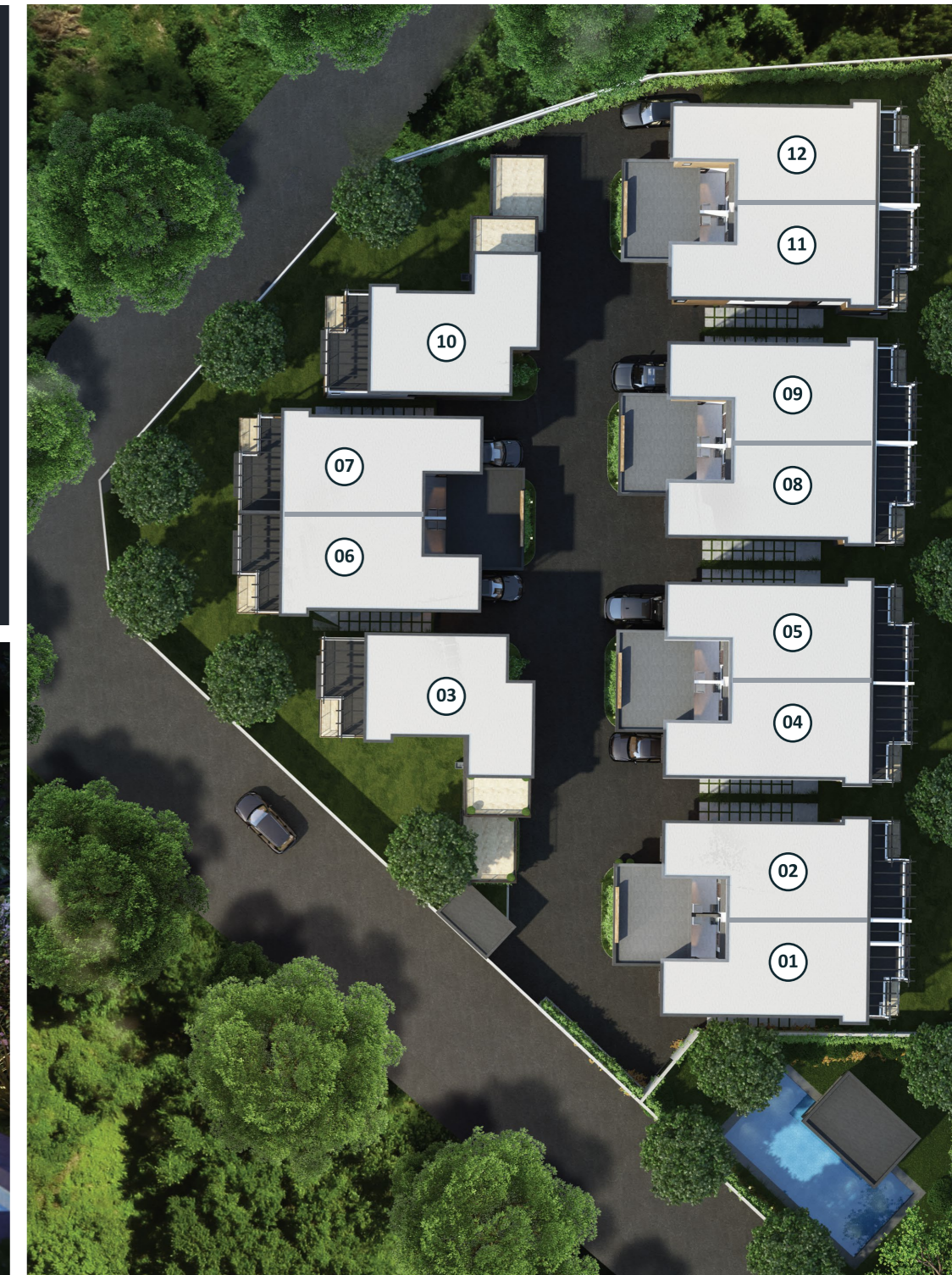
Conveniently located in one of the most coveted suburbs in Loresho, Akeva enjoys easy access through Waiyaki Way or Lower Kabete Road.

- 7 minute drive to Kianda School
- 9 minute drive to International Livestock Research Institute
- 10 minute drive to VetLab Sports Club
- 13 minute drive to Westgate Shopping Mall
- 15 minute drive to MP Shah Hospital
- 20 minute drive to Nairobi Central Business District
- 32 minute drive to Jomo Kenyatta International Airport



# Amenities

- Gazebo
- Swimming Pool
- Roof terrace
- Solar Water System
- CCTV surveillance
- Electric fencing
- Landscaped Gardens
- Children's play area
- Satellite TV And Fibre Optic Infrastructure
- Water Storage Facilities
- Intercom
- Power Backup for Common Areas
- Secure Parking For Residents And Visitors
- Manned Security At Entrance



Developers  
**Solanuela Limited**

Architect  
**UDesigns**

Project Managers  
**Limojade Management Limited**

Lawyers  
**Namasaka & Kariuki Advocates**

**SOLE AND EXCLUSIVE SELLING AGENTS**



**HassConsult Limited**, ABC Place Waiyaki Way  
P.O. Box 14090 - 00800 Nairobi Kenya,  
T: 0709 479 000  
E: [info@hassconsult.co.ke](mailto:info@hassconsult.co.ke)  
W: [www.hassconsult.co.ke](http://www.hassconsult.co.ke)

**Sales: 0709 479 479**

Property Reference No: 2090