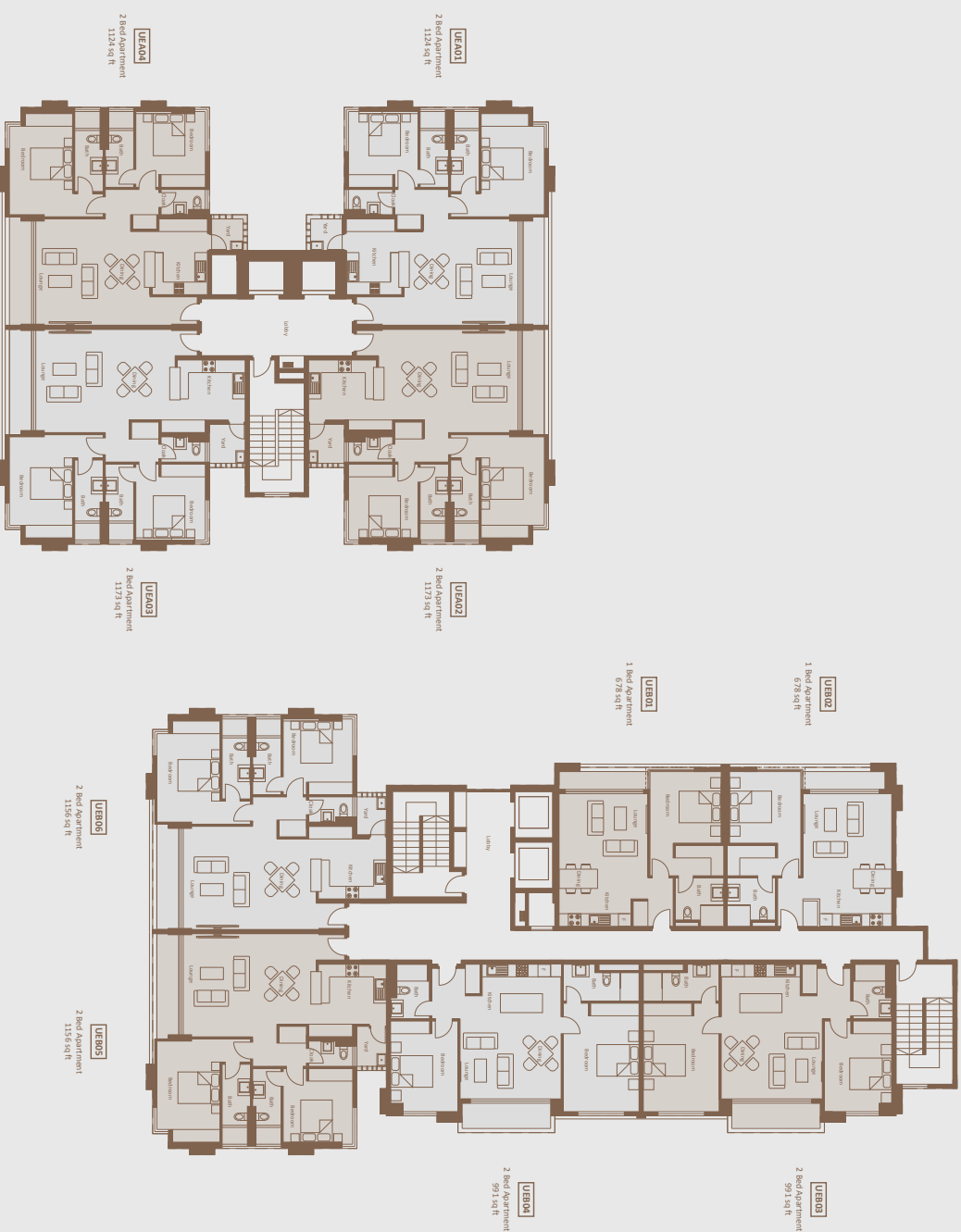


UPPER EAST
apartment series

RIVERSIDE
square

FINISHES

- Flooring** Wood-effect ceramic floor tiles with MDF painted skirting
 - Windows** Powder-coated aluminium frame with 6mm glass
 - Walls** Plaster and paint to living areas
Selective ceramic tiling to wet areas
 - Curtain Boxes** MDF pelmets, painted finish with PVC concealed rails
 - Doors** Veneer-faced MDF doors to living areas
 - Ceiling** Painted to underside of slab; select areas in gypsum
 - Kitchen** MDF cabinetry with stainless steel handles
Stone worktops
Stainless steel sink
 - Appliances** Built-in hob, oven and extractor hood
 - Wardrobes** Full-height MDF cabinetry
 - Balcony** Glass panels with stainless steel handrails
 - Balustrades** Glass panels with stainless steel handrails
 - Bathroom Fixtures** White wall-hung WC with concealed cistern
Vanity unit with integrated acrylic sink
Wall-mounted mirror
Overhead shower (additional wall-mounted hand shower to master bathroom)
10mm toughened glass shower screens
Towel rails, toilet roll holder and shower shelf
 - Electrical Fittings** Hager or equivalent, bronze fittings
- ## UTILITIES
- Mains power** K/R/L supply
 - Back-up power** Generator for common areas and apartments
 - Water supply** Mains water and borehole
 - Water heating** Electrical heaters
Solar water heating for penthouse units
 - Security** Intercom, CCTV surveillance, access control



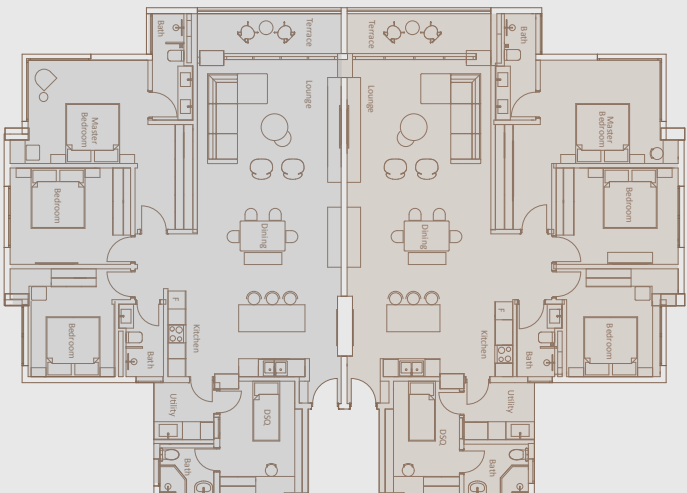
LOWER EAST
apartment series

RIVERSIDE
square

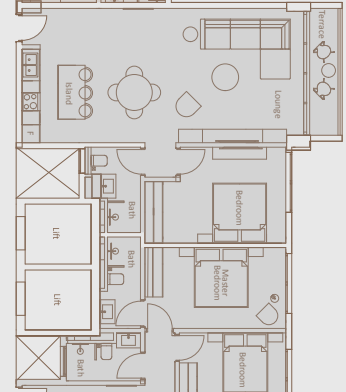
FINISHES

- Flooring** Wood-effect ceramic floor tiles with MDF painted skirting
- Windows** Powder-coated aluminium frame with 6mm glass
- Walls** Plaster and paint to living areas
Selective ceramic tiling to wet areas
- Curtain Boxes** MDF, painted, finished with PVC concealed rails
- Doors** Veneer-faced MDF doors to living areas
- Ceiling** Painted to underside of slab
- Kitchen** MDF cabinetry with stainless steel handles
Stone worktops
Stainless steel sink
- Appliances** Built-in hob, oven and extractor hood
- Wardrobes** Full-height MDF cabinetry
- Balcony** Glass panels with stainless steel handrails
- Balustrades** White wall-hung WC with concealed cistern
Vanity unit with integrated acrylic sink
- Bathroom fixtures** Wall-mounted mirror
Overhead shower (additional wall-mounted hand shower to master bedroom)
3mm toughened glass shower screens
Towel rails, toilet roll holder and shower shelf
- Electrical Fittings** Hager or equivalent, bronze fittings
- UTILITIES** KPLC supply
- Mains power** Generator for common areas and apartments
- Back-up power** Mains water and borehole
- Water supply** Electrical heaters, Solar water heating
- Water heating** Invercom, CCTV surveillance, access control
- Security**

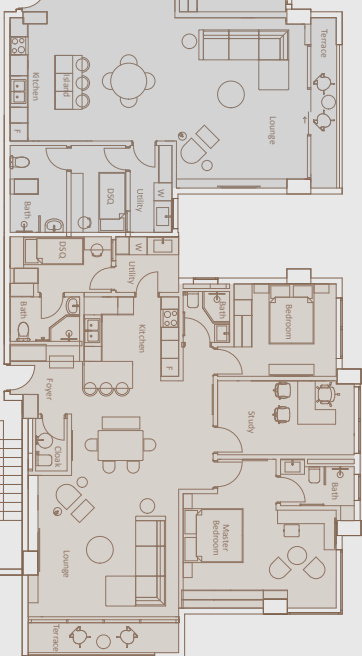
LE06
3 Bed Apartment
1536 sq ft



LE07
1 Bed Apartment
678 sq ft

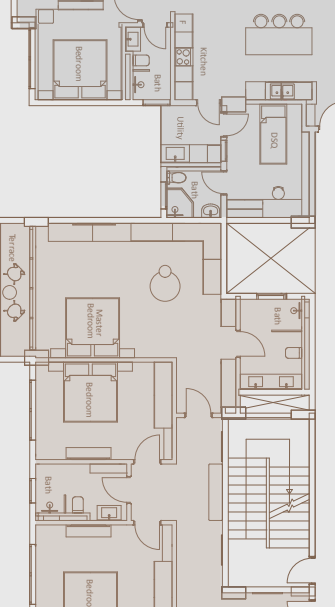


LE01
2 Bed Apartment
1130 sq ft

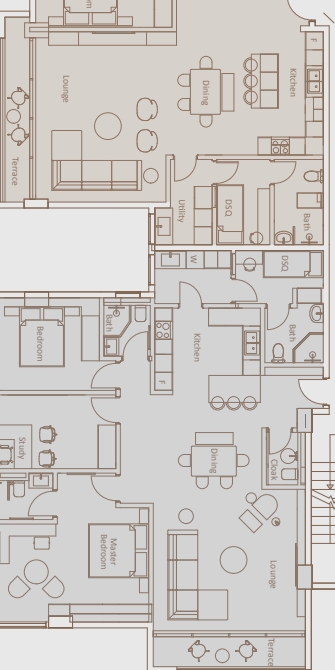


LE02
2 Bed Apartment
Plus Study and SD
1506 sq ft

LE05
3 Bed Apartment
1536 sq ft



LE04
3 Bed Apartment
1754 sq ft



LE03
2 Bed Apartment
Plus Study and SD
1506 sq ft



TEAM

Developers
One Zero Seven Riverside Drive Ltd

Development Consultants
HassConsult Ltd

Architect
Abdi Ismail

Project Manager
Designworks Ltd

Structural & Services Engineers
Structec Engineering Consultancy

Quantity Surveyors
Designworks Ltd

Legal Advisory
Abib & Associates Advocates